

ACTIVE LIVES CHILDREN AND YOUNG PEOPLE SURVEY

ACADEMIC YEAR 2018/2019

ST LUKE'S RC PRIMARY
SCHOOL

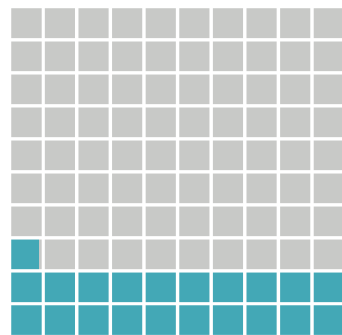
Version 1:

Issued July 2019

ACTIVITY LEVELS

(Moderate to vigorous intensity)

21%
ACTIVE
EVERY DAY



60+
MINUTES
ON
7 DAYS

ATTITUDES TOWARDS SPORT AND PHYSICAL ACTIVITY

97%

agree that they enjoyed taking part in exercise and sports

98%

agree that they understand why exercise and sports are good for them

81%

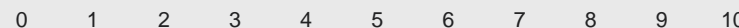
agree that they find exercise and sports easy

WELLBEING

Mean scores from answers given on a scale of 0-10 where 0 is low and 10 is high levels of agreement with statement asking about ...

Happiness yesterday

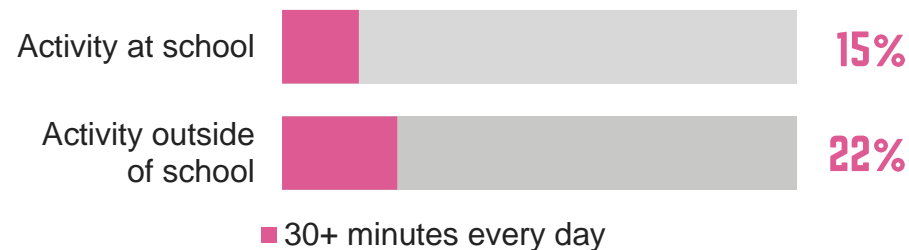
8.0



LOCATION OF ACTIVITY

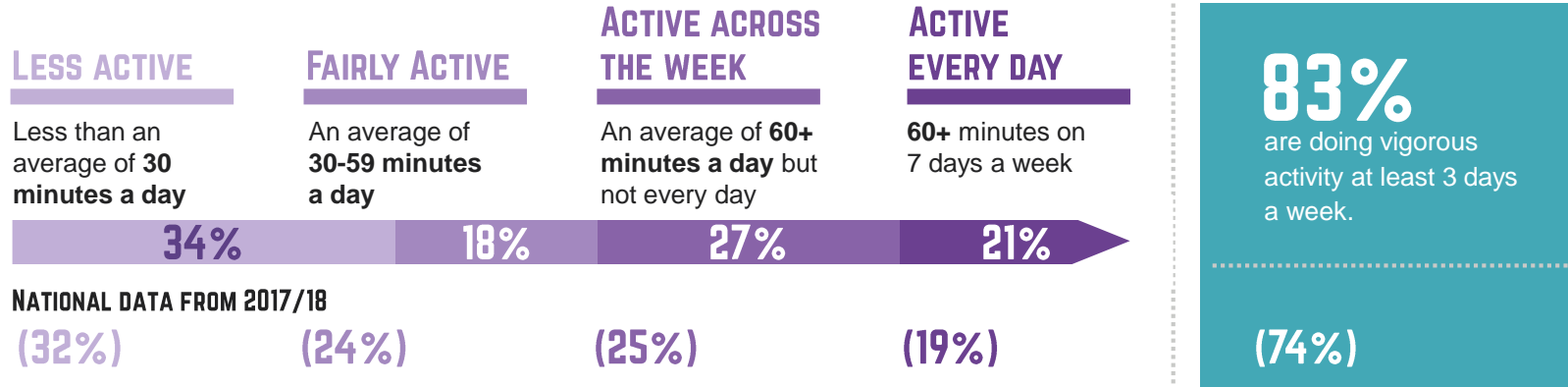
(30+ minutes moderate to vigorous activity every day)

Government guidelines set out that pupils should get 30 minutes of their daily physical activity during the school day and 30 minutes outside school.



LEVELS OF ACTIVITY

At St Luke's RC Primary School, **21%** of pupils do **60 minutes** of moderate to vigorous activity **7 days a week**, meeting the Chief Medical Officer's guidelines for levels of physical activity amongst children and young people. National figures from 2017/18 for each measure are shown in brackets.



HAVE YOU CONSIDERED?

How could you get more pupils doing activity in school time throughout the week?

BOYS AND GIRLS

(% active every day)

% that are active at your school (doing 60+ minutes of moderate to vigorous activity 7 days a week)

THERE IS NO DATA AVAILABLE FOR THIS METRIC

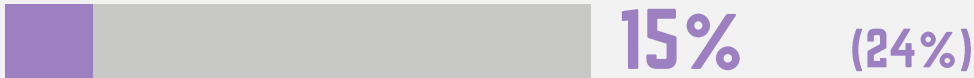
PARTICIPATION AT AND OUTSIDE SCHOOL

Government guidelines set out that pupils should get 30 minutes of their daily physical activity during the school day and 30 minutes outside school. National figures from 2017/18 for each measure are shown in brackets.

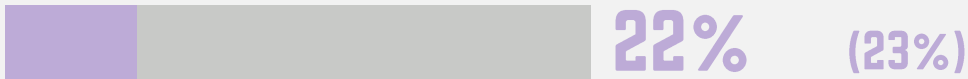
% OF PUPILS DOING 30 MINUTES OF MODERATE TO VIGOROUS ACTIVITY EVERY DAY

NATIONAL DATA FROM 2017/18

At school



Outside school



ACTIVITY LEVELS AT AND OUTSIDE SCHOOL FOR BOYS AND GIRLS

(30 minutes of moderate to vigorous activity every day)

THERE IS NO DATA AVAILABLE FOR THIS METRIC

HOW MUCH TIME IS SPENT DOING PE EACH WEEK?

60

minutes

per pupil at your school

PUPILS DOING BOTH 30 MINUTES AT SCHOOL AND 30 MINUTES OUTSIDE SCHOOL EVERY DAY

9%

HAVE YOU CONSIDERED?

What can you do to influence an increase in PE time?

ACTIVITY BREAKDOWN

The tables below show the percentage of those who report taking part in each activity in the previous week at moderate to vigorous intensity. Only the top 10 activities are included. National figures from 2017/18 for these activities are also shown.

AT SCHOOL

NATIONAL DATA
FROM 2017/18

Playing tag or other running games	52%	50%
Football	46%	32%
Kicking a ball about	40%	30%
Running	28%	26%
Climbing or swinging in playground	21%	18%
Rugby	18%	6%
Basketball	18%	10%
Dodgeball, benchball	18%	8%
Trampolining	16%	13%
Going on a walk	15%	19%

OUTSIDE SCHOOL

NATIONAL DATA
FROM 2017/18

Football	48%	33%
Kicking a ball about	39%	33%
Playing tag or other running games	37%	41%
Running	30%	25%
Trampolining	28%	24%
Walking for travel	25%	42%
Going on a walk	24%	30%
Dancing	24%	31%
Climbing or swinging in playground	24%	22%
Swimming	21%	33%

HAVE YOU CONSIDERED?

Have pupils expressed which activities they want to do more of?

YEARS 3-6 ONLY

PUPILS WERE ASKED ABOUT THEIR ATTITUDES TO SPORT AND PHYSICAL ACTIVITY

National figures from 2017/18 for each measure are shown in brackets.

CONFIDENCE

98%
(93%)

feel confident when exercising and playing sports

PHYSICAL COMPETENCE

81%
(74%)

find exercise and sports easy

HAVE YOU CONSIDERED?

What can be done to help improve confidence of pupils when exercising?

YEARS 1-2 ONLY

THERE IS NO DATA AVAILABLE

UNDERSTANDING

98%
(96%)

feel that they understand why exercise and sports are good for them

MOTIVATION

97%
(96%)

enjoy taking part in exercise and sports

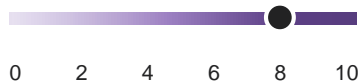
National figures from 2017/18 for each measure are shown in brackets.

FEELINGS OF HAPPINESS



How happy did you feel yesterday? (years 3-6 only)

8.0



(7.8)

Mean scores from answers given on a scale of 0-10, where 0 is low and 10 is high



How do you feel today? (years 1-2 only)

THERE IS NO DATA AVAILABLE FOR THIS METRIC

RESILIENCE

(years 3-6 only)

Pupils were asked how much they agree with the statement:



If I find something difficult, I keep trying until I can do it"

Those who agree or strongly agree have **positive self efficacy**

POSITIVE PERCEIVED SELF EFFICACY

Total 95%

NATIONAL DATA FROM 2017/18

(94%)

TRUST

(years 3-6 only)

Pupils were asked:



How much do you feel you can trust people who are a similar age to you?"

Those who answer trust them a lot, or trust them a bit have **positive levels of social trust**

POSITIVE PERCEIVED SOCIAL TRUST

Total 87%

(83%)

HAVE YOU CONSIDERED?

How could PE and sport help you to improve your pupils' social trust?

SWIMMING PROFICIENCY

All pupils should be able to do these things by the time they leave primary school.

National figures from 2017/18 for each measure are shown in brackets.

SWIMMING ABILITY

% of pupils who can swim 25m unaided

NATIONAL
DATA FROM
2017/18



CONFIDENCE AND CAPABILITY

% of pupils who can tread water

NATIONAL
DATA FROM
2017/18



% of pupils who can self-rescue (*years 3-6 only*)

Pupils were asked if they fell into a deep lake with all their clothes on, if they could swim 5m to land and get out without any help.



In 2018/19, the following year group had swimming lessons provided by your school:

Year 3.

Each pupil had **20-29** sessions each year

HAVE YOU CONSIDERED?

What could the school do to support pupils to meet the National Curriculum swimming requirements?

The Government encourages all schools to promote healthy eating and provide tasty and nutritious food and drink. The school food standards require schools to provide healthy options by restricting foods high in fat, salt and sugar.

PROVIDING FOOD EDUCATION FOR ALL PUPILS

Teachers were asked which of the following they have in place

Pupils encouraged to support catering staff

School grows food for on-site school meals

Professional development for teachers on food

Healthy eating is a curriculum priority

Provide extra-curricular cooking clubs

The school indicated that they provide some of the options presented

COMPLYING WITH SCHOOL FOOD STANDARDS

Teachers were asked which of the following they have in place

Contractual or annual assurance from caterer or local authority

Part of an award or accreditation scheme

Training for catering staff

Oversight from nominated school governor

Complies to food standards throughout the day

Banned unhealthy items from packed lunches

The school indicated that they provide the majority of the options presented

HAVE YOU CONSIDERED?

Checking the government's guidance on [School Food Standards?](#)

Using [Public Health England's school resources](#) to encourage pupils to build healthier habits for life.

NOTES

The Active Lives Children and Young People Survey is an online survey carried out by Ipsos MORI. Each term, a number of schools are randomly selected to take part in the survey, with the aim of getting 100,000 children and young people in Years 1 to 11 to complete it each academic year. The survey runs on an annual basis. More information on the survey can be found on the Sport England website. <https://www.sportengland.org/>

ST LUKE'S RC PRIMARY SCHOOL

www.greatersport.co.uk/Contact

SURVEY TIMINGS

Fieldwork for the survey took place between 2nd January to 14th April 2019.

SAMPLE

89 pupils from **3** classes completed the survey:

25 Pupils from **Year 2,**

30 Pupils from **Year 4,**

34 Pupils from **Year 6,**

3 parents completed the survey.

NATIONAL REPORT

The second national report by Sport England will be published in December 2019 and will be accessible via the Sport England website. That report will include data from the 2018/2019 academic year.

NO DATA AVAILABLE FOR THIS METRIC

You may see this message in place of a chart or statistic. This is shown when there were fewer than 30 pupils or parents answering the question overall or for the breakdown presented (e.g. boys and girls).

FURTHER INFORMATION

If you would like any further information about the results or survey, please contact your Active Partnership.

NATIONAL DATA WITHIN THIS REPORT

On some pages national level data from the 2017/18 academic year is shown for reference. In your school these are national figures from Year 1-6 (base:56,648). Go to <https://www.sportengland.org/media/13698/active-lives-children-survey-academic-year-17-18.pdf> to see the full National Report for 2017/18.

LIMITATIONS OF THE DATA

Due to the small numbers of pupils from your school that have participated in the survey, it is not possible to make reliable comparisons between your school results and the national level data. National data is therefore only provided as an indication of the national picture.

Any differences between groups may be down to the small sample sizes and may not be real differences.

MEASURES OF ACTIVITY

Moderate activity is defined as activity which makes pupils breathe faster.

Vigorous activity is defined as activity which makes pupils hot or tired.

ATTITUDES AND WELLBEING

For year 1-2 pupils the data on wellbeing and attitudes to sport has been provided by pupils, whilst the data on activity levels has been collected from the parent survey.